

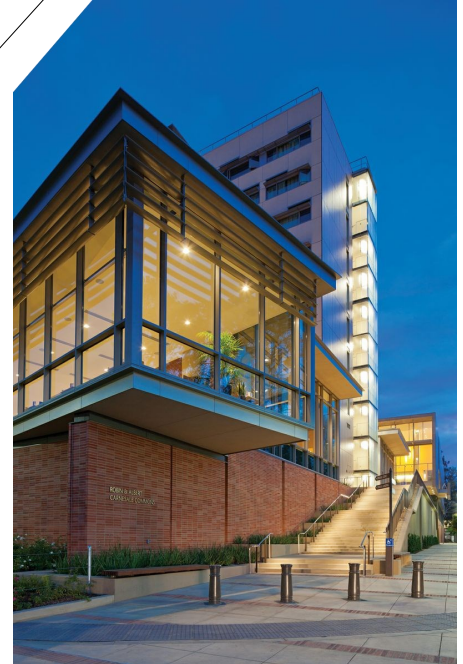
Department of Engineering

Hotels and Transportation

Technical Management Program at Carnesale Commons

March 22-27, 2019

Los Angeles, California



Notice

The Department of Engineering and Technology has prepared the following information for the convenience of our Technical Management Program participants. We have done our best to include current rates; however, the information provided should serve only as a guideline as all transportation, hotel, and parking rates are subject to change without prior notice. For final verification of prices and other details, contact the sources directly.

The listing of housing accommodations does not constitute endorsement by UCLA Extension and failure to include does not imply discrimination. Please include your comments and impressions of your hotel on the evaluation that we distribute at the conclusion of the program. Such feedback is essential to keep our housing list viable.

Transportation from Los Angeles-International Airport

SuperShuttle

For passengers arriving at the airport, SuperShuttle has ground transportation ticketing booths just outside the baggage claim area at all terminals. You may purchase tickets for immediate airport pickup in front of your air-line terminal. The rate is approximately \$25 for transportation from the airport to the Westwood/Brentwood area (rate varies according to final destination). The van drives you directly to your destination. Call SuperShuttle at (310) 782-6600. American Express, Carte Blanche, Diner's Club, MasterCard, and Visa are accepted. Visit supershuttle.com.

Taxi

Taxis are available at the airport with rates that range upward from \$30 for transportation to the UCLA campus and Westwood Village. Yellow Cab Company may be reached at (800) 711- 8294.

FlyAway®

Los Angeles World Airports provides FlyAway bus service to & from Westwood. The one-way fare is \$10. Visit lawa.org/flyaway for details, including hours of operation.

Hotel Transportation

Courtesy shuttle bus or limousine service to and from UCLA is available at some of our listed hotels (under Amenities). Check with the hotel for details.

Driving Directions

The Technical Management Program is conducted at Covel Commons on the UCLA campus. For those driving from LAX, exit the airport on Century Boulevard East and go about 1 mile to the 405 Freeway North. Go approximately 12 miles and exit the freeway at Sunset Boulevard; turn right. Turn right at Bellagio Drive and proceed to the stop sign at the top of the hill. Turn left on DeNeve Drive and travel one-quarter mile to SV (Sunset Village) parking structure.

Hotels, Locations, Rates & Special Services

All rates are "UCLA Rates" unless otherwise indicated. Most of the hotels require a credit card number or first night's deposit to guarantee a reservation. If you are eligible, we recommend that you also ask for the government rate to obtain the better of the two. To get the UCLA discount rate, contact the hotel directly and state that you are a UCLA Extension short course participant. Do not use a travel agent to get the discount. All hotels are subject to a state sales tax. An additional 12-14% bed tax may be added for hotels within the city of Los Angeles.

On Campus

Luskin Conference Center

425 Westwood Plaza
Los Angeles, CA 90095
Telephone: (310) 206-8585
Website: luskinconferencecenter.ucla.edu
Rate: \$246 per room
Amenities: Convenient UCLA location, campus shuttle service, complimentary wireless internet, business center, flat screen HDTV, and on-site fitness center

1-2 Miles from UCLA

UCLA Guest House

330 Charles Young Drive East Los Angeles, CA 90024
Telephone: (310) 825-2923
Fax: (310) 825-6108
Website: guesthouse.ucla.edu
Rate: \$239
Amenities: Convenient UCLA location, complimentary breakfast and coffee or tea, newspaper, and cable TV. High-speed Internet access; 24/7 Business Center; first-come, first-served parking.

Hilgard House Hotel 927

Hilgard Avenue Los Angeles, CA 90024
Telephone: (310) 208-3945
Fax: (310) 208-1972
Website: hilgardhouse.com
Rate: \$199
Amenities: Complimentary High-speed wireless Internet, free cable TV, Jacuzzi, free parking and continental breakfast, 10-minute walk to UCLA.

UCLA Tiverton House 900

Tiverton Avenue Los Angeles, CA 90024
Telephone: (310) 794-0151
Fax: (310) 794-0153
Website: tivertonhouse.ucla.edu
Rate: \$159
Amenities: Complimentary parking, coffee, tea, continental breakfast. Free wireless Internet access, 24/7 Business Center. Laundry room, child recreation room, fitness center, 10-minute walk to UCLA.

Hotel Angeleno

170 North Church Lane Los Angeles, CA 90049 Telephone: (310) 476-6411
Fax: (310) 472-1157
Website: hotelangeleno.com
Rate: \$189
Amenities: Complimentary valet parking (\$30 value), complimentary shuttle to/from UCLA, Getty Museum, Westwood and Brentwood Villages, and anywhere within a 3-mile radius. PC and Mac computers, complimentary high-speed and wireless Internet and HBO, 2-line phone with voicemail, CD player, refrigerator, flat screen TV, and coffeemaker. Outdoor heated pool and indoor fitness center. Complimentary wine hour every evening from 5:30pm-6:30pm.

Luxe Hotel

11461 Sunset Boulevard Los Angeles, CA 90049
Telephone (Direct): (310) 476-6571
Reservations: (800) 468-3541
Fax: (310) 471-6310
Website: luxehotels.com/sunset
Rate: \$249
Amenities: Parking \$20 per day plus tax, complimentary high-speed and wireless Internet, spacious rooms, flat screen TV, iPod docks, Business Center 24/7, mini-bar, outdoor pool, tennis courts, day spa, room service open 6am to 2am, safes available, resort-like property. Lounge has live music from 4pm to 11pm.

Hotel Palomar

10740 Wilshire Boulevard
Los Angeles, CA 90024
Reservations:(800)472-8556
Hotel Front Desk: (310) 475-8711

Website:

hotelpalomar-lawestwood.com

Rate: Approximately \$264; Varies by day
Amenities: Complimentary morning coffee/tea bar, newspaper, and wireless internet, free wine hour 5pm-6pm, full-service concierge, 24-hour fitness center, outdoor swimming pool. Hotel is pet-friendly and 100% non-smoking. Parking \$37/day.

2-7 Miles from UCLA

Hilton Hotel

9876 Wilshire
Boulevard
Beverly Hills, CA 90210
Telephone: (310) 274-7777
Fax: (310) 285-1313
Website: hilton.com

Rate: Approximately \$265; Varies by day
Amenities: Self-parking and valet \$36 per day; 24/7 Business Center, high-speed and WiFi connection; in-room coffee maker; fitness center, heated outdoor pool, Aquastar spa; Circa 55 restaurant, Trader Vic's Lounge, lobby bar and 24-hour room service.

CrownePlazaHotel

1150 S Beverly Dr
Los Angeles, CA 90035
Telephone: (310) 553-6561
Fax: (310) 277-4469
Website: mybeverlyhillshotel.com
Rate: \$369

Amenities: Complimentary Wi-Fi, business center, free incoming/outgoing calls and fax, 24-hr fitness center, lobby lounge, room service, outdoor heated pool, self-parking \$23, valet \$28, onsite car/limo rental, walking distance to Beverly Hills dining and shopping.

Holiday Inn Express

10330 West Olympic Boulevard
Century City, CA 90064
Telephone: (310) 553-1000
Fax: (310) 277-1633
Website: hiecenturycity.com
Rate: \$193.50

Amenities: Parking \$18, complimentary high-speed internet access, express breakfast bar, and newspaper. Refrigerator, fitness center and whirlpool tub.

CourtyardMarriott

10320 West Olympic Boulevard
Los Angeles, CA 90064
Telephone: (310) 556-2777
Fax: (310) 772-0805
Website: courtyard.com

Rate: \$293

Amenities: Valet or self-parking \$19; complimentary high-speed Internet access; large work desk; refrigerator, microwave, and coffee maker in every room; courtesy *USA Today*, Monday through Friday; fitness center; outdoor spa; restaurant and bar.

Comfort Inn

2815 Santa Monica Boulevard
Santa Monica, CA 90404
Telephone: (310) 828-5517
Fax: (310) 829-6084
Website: comfortinnsantamonica.com
Rate: \$179
Amenities: Complimentary high-speed Internet access, continental breakfast, refrigerator, outdoor heated pool, arranged shuttle to LAX, free parking. Two miles from the beach.